



# Bugfixes

## 2025-25.20



### **Technical Inquiries**

Please ask the responsible contact person in our support department.

E-mail: [e3-support@de.zuken.com](mailto:e3-support@de.zuken.com)

### **Note:**

Zuken is not responsible for any errors, which may appear in this documentation. Liability, due to direct and indirect losses resulting from the delivery or use of this documentation, is excluded to the extent permitted by law. This documentation contains copyrighted information. All rights, especially those pertaining to the duplication and distribution as well as the translation, are reserved. This documentation, whether wholly or in part, may not be reproduced in any form (photocopy, microfilm, etc.), or processed, duplicated or distributed using an electronic system without Zuken's prior written consent.

### **Contact**

Zuken E3 GmbH  
Laemmerweg 55  
D-89079 Ulm/Einsingen

Phone : +49 7305 9309-0  
Fax: +49 7305 9309-99  
Web: <http://www.zuken.com>  
E-mail: [e3-info@de.zuken.com](mailto:e3-info@de.zuken.com)



## NOTE regarding data conversion

| Build | Single-User Project | Multi-User Project     | Component library   | COM-registration       |
|-------|---------------------|------------------------|---------------------|------------------------|
| 25.00 | < 25.00: <b>yes</b> | < 25.00: <b>yes</b>    | < 25.00: <b>yes</b> | < 25.00: <b>yes</b>    |
| 25.10 | < 25.00: <b>yes</b> | < 25.00: <b>yes</b>    | < 25.00: <b>yes</b> | < 25.00: <b>yes</b>    |
|       | from 25.00: no      | from 25.00: <b>yes</b> | from 25.00: no      | from 25.00: <b>yes</b> |
| 25.11 | < 25.00: <b>yes</b> | < 25.00: <b>yes</b>    | < 25.00: <b>yes</b> | < 25.00: <b>yes</b>    |
|       | from 25.00: no      | from 25.00: <b>yes</b> | from 25.00: no      | from 25.00: <b>yes</b> |
|       | from 25.10: no      | from 25.10: no         | from 25.10: no      | from 25.10: no         |
| 25.20 | < 25.00: <b>yes</b> | < 25.00: <b>yes</b>    | < 25.00: <b>yes</b> | < 25.00: <b>yes</b>    |
|       | from 25.00: no      | from 25.00: <b>yes</b> | from 25.00: no      | from 25.00: <b>yes</b> |
|       | from 25.10: no      | from 25.10: <b>yes</b> | from 25.10: no      | from 25.10: no         |
|       | from 25.11: no      | from 25.11: <b>yes</b> | from 25.11: no      | from 25.11: <b>yes</b> |

### Projects and component library:

- **Yes:** The data is converted and can therefore no longer be opened with the indicated versions.
- **No:** The data is not converted and can therefore be opened with the indicated version.

### COM registration:

- **Yes:** The COM library has been changed and must be registered again. (start the program as ADMIN using „E3.series.exe /register“). Is done automatically during the installation of version 2025.



## NOTE regarding runtime dependency

Starting with E3.series version 2025-25.20, an update to *Microsoft Visual C++ 2015-2022 Redistributable (x64)* is required.

### Installation of E3.series 2025-25.20 via **setup** (recommended method):

- The installation ensures that the required version of the redistributable is installed (it is also installed if required).

### Installation of E3.series 2025-25.20 via **msi** package:

- Please check in the installed apps whether the following version of the redistributable is already installed:



- If not, please install the redistributable that comes with the msi package  
`\ISSetupPrerequisites\{25E2F1F0-09A7-4C6A-ADC7-CA620D43574E}\VC_redist.x64.exe`

### Update of E3.series 2025-25.20 from the **ZIP** archives:

- Please check in the installed apps whether the following version of the redistributable is already installed:



- If not, please install the redistributable contained in the ZIP archive `e3.series_2025_25.20-64bit.zip` in the subdirectory `vc2022redist`.



## NOTE regarding module dependency

If E3.RevisionManagement is in use, it is not supported due to

- *E3-1249 (COM: Extension of ExportForeign to also output ComponentPin attributes)*

It is mandatory to install **E3.RevisionManagement 25.0.1** (or newer).

## Bugfixes

The bug fixes are sorted and listed by numbers. This enables you, for example, to easily search for bugs reported to our support office.

|         |   |
|---------|---|
| E3-766  | Performance improvement when switching variants/options if many master/slave texts are contained. (Designer-44251)                        |
| E3-1367 | Rotation with 3D triad triggers "fit space requirement".  |
| E3-1544 | When importing subcircuit, item validation is activated - due to error during indirect component update.                                  |
| E3-1650 | Properties window shows the internal attribute name for UI language US (1).   |
| E3-1717 | Create model: Drill holes are set to the zero point when dragging and dropping an existing model into a new model.                        |
| E3-1784 | Error importing a STEP file: the skin is partially transparent.   |
| E3-1838 | Warning when reading in a partfile or the redliner information if the path of the file is too long (>184 characters).                     |
| E3-1847 | Panel 2D view of right cabinet door not correct.  |
| E3-1889 | Error message on structure template file when sheet is created (An internal validation could detect errors. The last action is rejected.) |
| E3-1960 | Multiuser setup: Expert mode no longer works with the current SQL driver (19). (Designer-42926)   |
| E3-2105 | If you align the mounting rails vertically, mounted designs are taken into account even though you have not selected them.                |
| E3-2167 | Cutting/inserting mounting rails with many terminals takes an unexpectedly long time.   |
| E3-2186 | Signal logic lines are not always shown.  |
| E3-2222 | Drillhole definitions are only displayed in the DBE's edit mode.  |
| E3-2304 | E3.3DRoutingBridge: In the SVG file of the HCV export there are unmasked control characters.  |
| E3-2357 | The validation recognises an error when creating a 2D view with an invalid document type in the sheet.                                    |
| E3-2390 | Copying areas from an Excel spreadsheet to an E3 sheet creates an image (graphic) instead of a comment text.                              |
| E3-2409 | COM: Pin.SetName does not allow blanks.   |
| E3-2412 | The 3D view toolbar buttons remain active even though the focus is no longer on the panel region.   |
| E3-2424 | DBE: for the connection type 'wire seal', the min/max cross-section can be entered.   |
| E3-2446 | Entries in the 'Core connection' properties disappear if the component name contains brackets at the end.                                 |
| E3-2476 | After creating a new menu, existing menu entries disappear.   |
| E3-2478 | The symbol exchange in the symbol properties sometimes takes an unexpectedly long time.   |
| E3-2507 | E3.RevisionManagement: A changed text is not recognised as a change in the free comparison.   |
| E3-2515 | The terminal sorting file (in the settings) is not written to the template file and therefore cannot be updated via 'Reload settings'.    |
| E3-2548 | A second E3 instance launched via E3.Starter keeps the lock file (*.lck) of the first E3 instance open.                                   |
| E3-2583 | DBE: The symbol connection nodes are displayed too small in the 'Database symbol connection nodes' toolbar. (Designer-37078)              |
| E3-2592 | The export with the MUAdmin tool is cancelled if an Oracle DB is used.  |

|         |   |
|---------|---|
| E3-2682 | The 'Trim graphic' function takes into account graphics that are hidden by options.   |
| E3-2685 | During PDF export, circles may be shifted in the symbol view of connectors.   |
| E3-2709 | After rotating and scaling a symbol, the connection point positions are no longer correct.  |
| E3-2711 | When the BMK of the assembly is changed, the connection target in the text node is not updated.   |
| E3-2712 | The function 'Trim graphic' with assigned option leads to a validation message with dump file (*.dmp).  |
| E3-2715 | For sheet names with a leading 0, 'pulling down' the sheet name in the sheet table leads to the end of E3.  |
| E3-2755 | With the 'Align objects' function, an offset value entered jumps back to the previous value.  |
| E3-2784 | In the 'Import -> DXF/DWG and DGN' dialogue, fonts are listed several times in the 'Font' selection.  |
| E3-2806 | If a value is typed in the Dimensions settings for Accuracy, it will not be applied.  |
| E3-2883 | After activating the Japanese keyboard layout, Unicode abbreviations are sometimes displayed in the properties window.  |
| E3-2885 | Absolute rotation of texts on control cabinet sheets inactive   |
| E3-2935 | DBE: While editing a model, using the 'Copy/Paste' and 'Place at original position' functions does not result in placement at the original position.                          |
| E3-2952 | The function "Reconnect Cores" leads to project inconsistencies.  |
| E3-2988 | Creating an MU project in Oracle takes a very long time.  |
| E3-2998 | DBE: The modification of a component within a block component loses the model of the block component.   |
| E3-3033 | The segment diameter is not calculated correctly.   |
| E3-3037 | It is not possible to use all HD symbols used as ViewDefinitions by E3.infinite.  |
| E3-3069 | COM: Sht.AlignObjects - The parameters 'mode = 3 (DISTRIBUTE_OBJECTS_HORI)' and 'mode = 4 (DISTRIBUTE_OBJECTS_VERT)' no longer work correctly if a reference ID is specified. |
| E3-3081 | If a symbol is rotated when it is placed, the text is also scaled when it is subsequently scaled.   |
| E3-3086 | If a connector symbol is rotated during placement and then scaled, E3 moves the symbol to not rotated and out of the symbol frame.  |
| E3-3105 | Importing a part file can lead to a validation message.   |
| E3-3187 | Rename wire is slowly when connection table is active.  |
| E3-3194 | The "Show items without variants/options" setting doesn't behave as expected.   |
| E3-3352 | HLA and location are no longer inherited from the panel sheet.  |

## Feature Enhancements

Additionally, we also have added some new / enhanced functionality in this service pack.

|         |   |
|---------|---|
| E3-440  | COM: New methods in the DBESlot interface to be able to create a slot with all its properties. (Designer-43816) |
| E3-503  | The character set for DXF/DWG export should be able to be set in the cfg file. (Designer-44212)                 |
| E3-711  | COM: New method to get the list of "connected" cable ducts from the specified cable duct. (Designer-44052)      |
| E3-2558 | DBE: During STEP import, the STEP zero point should be placed on the Origin (accept X&Y, ignore Z).             |
| E3-2613 | Database tree: The filters for attribute values in the component search should not follow on from one another.  |
| E3-2817 | COM: New method to determine the unscaledness of a wire, cable core, pipe/hose. (Designer-32473)                |

## Last Minute Information

Last-minute information that has not yet found its way into the E3 documentation.

### Regarding E3-2613

A new registry key is read to control the behaviour:

- [HKLM]\Software\Zuken\E3.series\25.0\DatabaseTreeOptimization (DWORD)
- [HKCU]\Software\Zuken\E3.series\25.0\DatabaseTreeOptimization (DWORD)
- The value can be a combination of the following values:
  - 0x1 The content of the selection lists is not adjusted when a search criterion is entered/selected.
  - 0x2 If <All> is selected in a search field, the tree is collapsed before being rebuilt.

If the registry key is missing or the value is 0x0, the database tree behaves as before version 2025-25.20.

### Regarding E3-503

There is a new section [DWG Code Page] in the DXF configuration file. The code page to be used for texts in the DWG file can be defined here.

The following values are possible (in some cases there are 2 values that set the same code page. These are labelled with /:

|                    |                       |          |          |
|--------------------|-----------------------|----------|----------|
| ASCII              | DOS852                | ksc5601  | ansi874  |
| 8859_1 / iso8859-1 | DOS855                | johab    | ansi932  |
| 8859_2 / iso8859-2 | DOS857                | DOS866   | ansi936  |
| 8859_3 / iso8859-3 | DOS860                | ansi1250 | ansi949  |
| 8859_4 / iso8859-4 | DOS861                | ansi1251 | ansi950  |
| 8859_5 / iso8859-5 | DOS863                | ansi1252 | ansi1361 |
| 8859_6 / iso8859-6 | DOS864                | gb2312   | ansi1200 |
| 8859_7 / iso8859-7 | DOS865                | ansi1253 | ansi1258 |
| 8859_8 / iso8859-8 | DOS869                | ansi1254 | utf8     |
| 8859_9 / iso8859-9 | DOS932                | ansi1255 | cnt      |
| DOS437             | MACINTOSH / mac-roman | ansi1256 |          |
| DOS850             | big5                  | ansi1257 |          |

The order in which the value is determined is:

1. DXF config file
2. [HKCU]\Software\Zuken\E3.series\25.0\Settings\DXFDWGCodepage
3. DOS850 is used

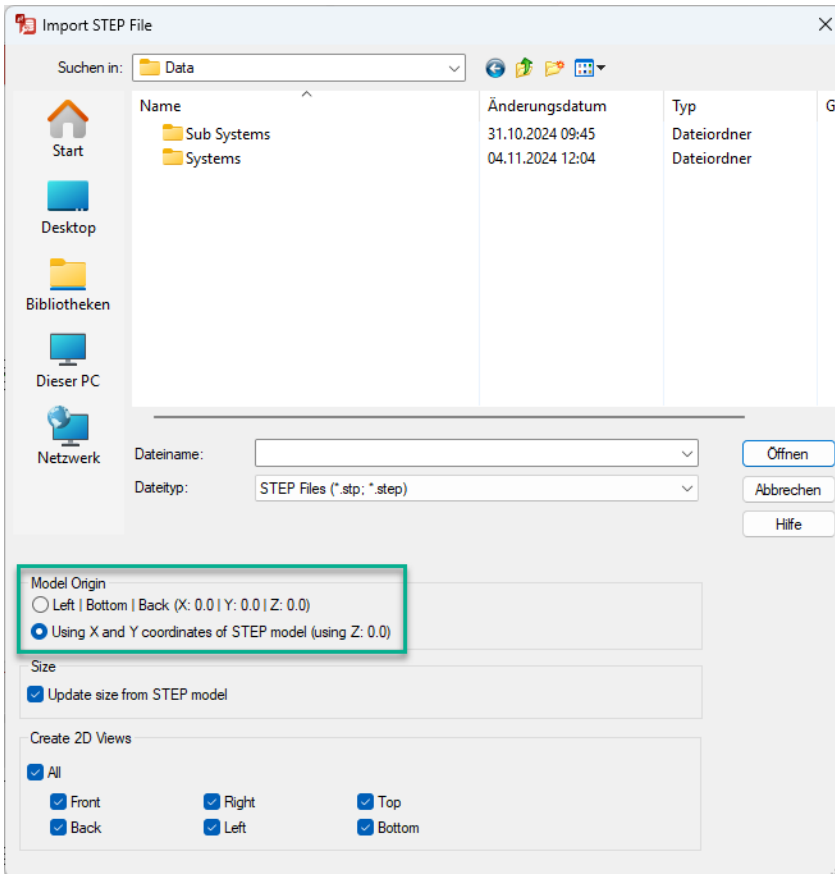
If the set value is not recognised, a warning is issued during import ("Could not resolve the DWG code page '%s' given in the DXF configuration file.").



## Regarding E3-2558

When importing a step file, the zero point of the design can be determined.

- Zero point fixed at 0, 0, 0.
- Take the zero point from the step file (x and y coordinates only).



A flag has been added to the COM method `DbeModelInterface.ImportStep()`:

- 0x80 = Take the zero point from the step file.

## Regarding E3-440

There are new methods in the DBESlot interface for creating and deleting a slot with all its properties..

**CreatePoint**( int modelid, double xpos, double ypos, double zpos, double xdir, double ydir, double zdir, double rotation, BSTR description, BSTR name, int flags )

- "modelid": id of the model
- "xpos", "ypos", "zpos": x,y,z-position of the new slot
- "xdir", "ydir", "zdir": direction vector of the new slot (should be a normalized vector: 0,0,1 (front); 0,0,-1(back); 0,1,0(top); 0,-1,0(bottom); 1,0,0(right); -1,0,0(left)
- "rotation": rotation of the new slot
- "description": description of the new slot
- "name": name of the new slot
- "flags": for future use

returns:

- -1 modelid is not a valid model
- -2 invalid flags given
- -3 given direction is not valid
- -4 empty description was given, this is not valid
- -7 slot could not be created
- > 0 ID of the new slot

**CreateLine**( int modelid, double xpos, double ypos, double zpos, double xdir, double ydir, double zdir, double length, double width, double rotation, BSTR description, BSTR name, int flags )

- "modelid": id of the model
- "xpos", "ypos", "zpos": x,y,z-position of the new slot
- "xdir", "ydir", "zdir": direction vector of the new slot (should be a normalized vector: 0,0,1 (front); 0,0,-1(back); 0,1,0(top); 0,-1,0(bottom); 1,0,0(right); -1,0,0(left)
- "length": length of the new slot
- "width": width of the new slot
- "rotation": rotation of the new slot
- "description": description of the new slot
- "name": name of the new slot
- "flags": for future use

returns:

- -1 modelid is not a valid model
- -2 invalid flags given
- -3 given direction is not valid
- -4 empty description was given, this is not valid
- -5 length is invalid
- -7 slot could not be created
- > 0 ID of the new slot

**CreateAreaRectangle**( int modelid, double xpos, double ypos, double zpos, double xdir, double ydir, double zdir, double length, double width, BSTR description, BSTR name, int flags )

- "modelid": id of the model
- "xpos", "ypos", "zpos": x,y,z-position of the new slot
- "xdir", "ydir", "zdir": direction vector of the new slot (should be a normalized vector: 0,0,1 (front); 0,0,-1(back); 0,1,0(top); 0,-1,0(bottom); 1,0,0(right); -1,0,0(left)
- "length": length of the new slot
- "width": width of the new slot
- "description": description of the new slot
- "name": name of the new slot
- "flags": for future use

returns:

- -1 modelid is not a valid model
- -2 invalid flags given
- -3 given directions are not valid
- -4 empty description was given, this is not valid
- -5 length is invalid
- -6 width is invalid
- -7 slot could not be created
- >0 ID of the new slot

|  |   |
|--|---|
| <b>CreateAreaPolygon</b> ( int modelid, VARIANT* xarr, VARIANT* yarr, VARIANT* zarr, double xdir, double ydir, double zdir, BSTR description, BSTR name, int flags )   |   |
| <ul style="list-style-type: none"> <li>• "modelid": id of the model</li> <li>• "xarr", "yarr", "zarr": arrays of points; each array-element is one part (x/y/z) of a point in 3d, therefore each array should have the same length</li> <li>• "xdir", "ydir", "zdir": direction vector of the new slot (should be a normalized vector: 0,0,1 (front); 0,0,-1(back); 0,1,0(top); 0,-1,0(bottom); 1,0,0(right); -1,0,0(left)</li> <li>• "description": description of the new slot</li> <li>• "name": name of the new slot</li> <li>• "flags": for future use</li> </ul> | <p>returns:</p> <ul style="list-style-type: none"> <li>• -1 modelid is not a valid model</li> <li>• -2 invalid flags given</li> <li>• -3 given direction is not valid</li> <li>• -4 array sizes of positions (x/y/z) are not equal</li> <li>• -5 array consist of less than 4 valid points</li> <li>• -6 polygon is not closed</li> <li>• -7 polygonpoints are not plane</li> <li>• -8 shape of polygon is not valid</li> <li>• -9 slot could not be created</li> <li>• &gt;0 ID of the new slot</li> </ul> |
| <b>Delete</b> ( int flags )  |   |
| <ul style="list-style-type: none"> <li>• "flags": for future use</li> </ul>  | <p>returns:</p> <ul style="list-style-type: none"> <li>• -1 currently no valid slot set</li> <li>• -2 invalid flags given</li> <li>• -3 mount or cable duct</li> <li>• -4 unknown error</li> <li>• 1 current slot was deleted</li> </ul>  |



## Americas

### North America

Zuken USA Inc.  
Westford, MA 01886, USA  
Tel: +1 978 692 4900

## Asia

### Japan

Zuken (World Wide Head Office)  
Yokohama, Kanagawa 224-8585, Japan  
Tel: +81 45 942 1511

### China

Zuken (Shanghai) Technical Center Co., Ltd.  
Room 301, No.555 Nanjing West Road, Shanghai,  
200041, People's Republic of China  
Tel: +86-21-3218-1784

### Korea

Zuken Korea Inc.  
Seoul 135-283, Korea  
Tel: +82 2 5648031

### Singapore

Zuken Singapore Pte Ltd.  
#22-05 Gateway East, Singapore 189721  
Tel: +65 6392 5855

### Taiwan

Zuken Taiwan Inc.  
Taipei 110, Taiwan  
Tel: +886 2 7718 1116



## Europe

### Germany

Zuken GmbH (European HQ)  
D-85399 Hallbergmoos, Germany  
Tel: +49 89 7104059 00

Zuken E3 GmbH  
D-89079 Ulm, Germany  
Tel: +49 7305 9309 0

Zuken E3 GmbH  
D-30659 Hannover, Germany  
Tel: +49 511 8595 9489

### Switzerland

Zuken E3 GmbH  
CH-5504 Othmarsingen, Switzerland  
Tel: +41 62 561 08 00

### United Kingdom

Zuken UK Ltd.  
Bristol, BS32 4RF, UK  
Tel: +44 1454 207 801

### France

Zuken S.A.  
#91974 Les Ulis Cédex, France  
Tel: +33 1 69 29 48 00

### Italy

Zuken S.r.l.  
20090 Milanofiori Assago, Milan, Italy  
Tel: +39 02 575 921

### Netherlands

Zuken GmbH  
NL-6075 HA Herkenbosch, The Netherlands  
Tel: +31 475 520 998