

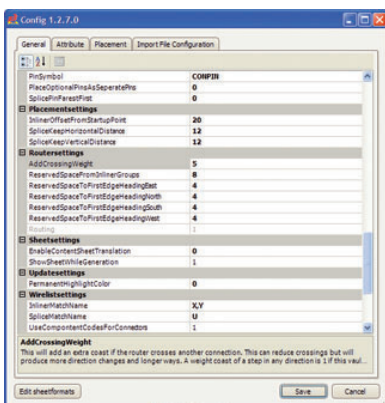
Automatically Create Wiring Diagrams

E³.Wiring Diagram Generator

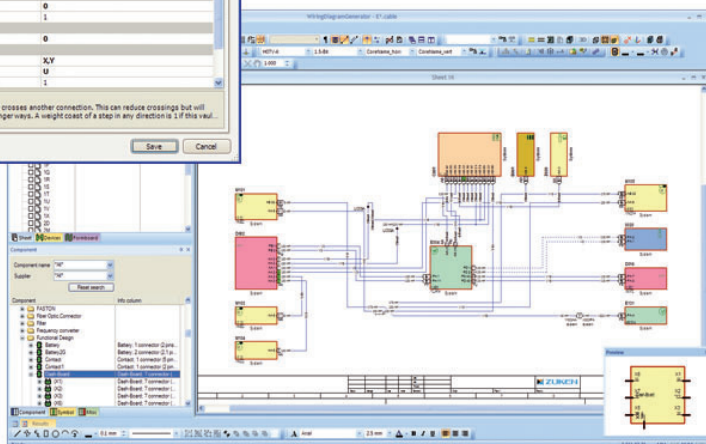
D A T A S H E E T

Introduction

E³.Wiring Diagram Generator automatically generates schematics/wiring diagrams for development, service and after sales. It can also be used to migrate and create standardized diagrams from older systems. After defining the diagram placement and routing rules, schematic/wiring diagrams are generated automatically from a netlist (connection list in CSV format). The diagrams created by E³.Wiring Diagram Generator can easily be modified as you would any drawing using E³.cable. This is supported by additional functionality such as deleting connections and automatic rerouting. Modifications to the entire system or specific subsystems can be implemented using the Update functionality. All modifications can be optionally listed and highlighted as well. E³.Wiring Diagram Generator functionality is integrated in the E³.cable user interface with its own easy-to-use toolbar. A broad range of diagrams from simple from-to connections to more complex environments can be processed. For example, variants, splices, inline connectors, wiring and display symbols are all supported.



Configuration menu for default settings, placement and routing rules



Automatically generate wiring diagrams; configurable placement and routing rules

Special Functionality in E³.Wiring Diagram Generator

- Easy-to-use toolbar integrates into E³.cable
- Customer-specific configuration
- Define placement and routing rules
- Generate diagrams automatically for individual systems (e.g. brakes, lighting)
- Selectively regenerate individual systems
- Modifications using integrated automatic functionality
 - Disconnect signals
 - Move components to another position
 - Regenerate connections
- Update functionality displays all modifications

The E³.series Standard

- Completely integrated in Windows® environment
- User-interface in numerous languages; easy to switch
- Supports all Windows® fonts using UNICODE
- Configurable user interface and toolbars
- Object-oriented user interface with possibility to directly integrate in other applications
- Display drawings using different norms (DIN, ANSI, JIC)
- Supports any sheet format, e.g. DIN, Ladder, special formats
- Translate text into any language
- Search mechanisms for symbols, devices, connections, text and attributes
- Context-sensitive Online Help
- 256 object-related display levels
- Print and plot using all Windows® standard drivers
- Supports standard formats like STEP, DXF/DWG, SVG, PDF, pixel graphics
- Bidirectional API (COM/DCOM Standard)
- Integrated database editor
- Compatible with data from all previous E³.series versions

The E³.series Base Functionality

- Automatic and parallel connections
- Save, load, copy, rotate and mirror drawings and areas
- Extensive functionality for exchanging symbols and components
- Continuous verification of adherence to manufacturing specifications, such as multiple assignment of symbols and overcrowding of components
- Supports variants and options, Boolean operators and alias names
- Online cross-references for connections and devices
- Object and text hyperlinks also within E³.series projects
- User-defined connection attributes
- User-defined grid sizes, fonts and line types
- Drag and Drop
- Dynamic zooming and panning

Additional E³.series Modules

E³.cable

E³.cable offers enhanced functionality for designing cables and cable harnesses. Different views of the design enable specific documents to be created for production, start up and service.

E³.topology

From idea to detailed wiring plan, E³.topology enables early evaluation of system harnesses including their length, weight and cost. This allows tradeoff analysis of harnesses and sub-harnesses to optimize manufacturing, performance and cost.

E³.formboard

The module used to create 1:1 nailboard drawings for manufacturing cable harnesses. Quickly and easily place views, define the cable harness structure as well as specify the mounting and cable protection.

E³.view

E³.view is the free-of-charge viewer for all E³.series projects (.e3s) and special viewer files (.e3v). It can be used by anyone within a company or passed on to suppliers and customers.

E³.3D Routing Bridge

E³.3D Routing Bridge transfers wire, cable and cable harness information to 3D M-CAD systems. After routing, the individual wire lengths can be transferred back to E³.series.